

## SERIES DQ and DU DRYWALL FRAMES INSTALLATION INSTRUCTIONS

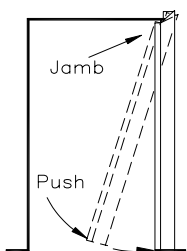
(DOES NOT APPLY TO LABELED OR CASED OPENING FRAMES)

### TO DETERMINE ROUGH OPENING:

ADD 2" TO DOOR OPENING WIDTH  
ADD 1" TO DOOR OPENING HEIGHT

e.g., For a 3068 door opening, the rough opening is: 38" x 81"

STEP 1



### PROCEDURE

#### STEP 1

- A. Begin installation by pushing the top of one jamb over the wall.
- B. Hold the top in place then push the bottom in towards and over the wall.

#### STEP 2

- A. Position frame head over the wall.
- B. Align head tabs with jamb slots then slide head towards jamb and engage tabs in slots.

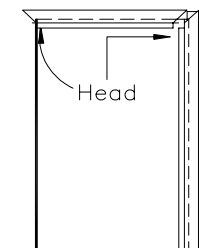
#### STEP 3

- A. Push the top of the remaining jamb over wall and mate jamb slots and head tabs.
- B. Push the bottom of this jamb in towards and over the wall.
- C. Level the head.

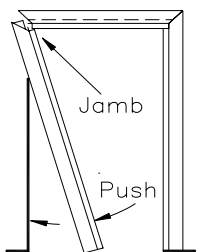
#### STEP 4

- A. Insert screw driver into top plumb anchor. Alternately adjust top plumb anchors until they bear firmly against studs.
- B. Plumb hinge jamb and fasten at sill.\*
- C. Verify that head is still level.
- D. Place a temporary wood spreader between jambs at sill. Adjust strike jamb to fit firmly against spreader and fasten at bottom of this jamb.\*
- E. Adjust intermediate plumb anchors (if present) until they too bear firmly against studs
- F. Install mutes in holes provided in door stops.

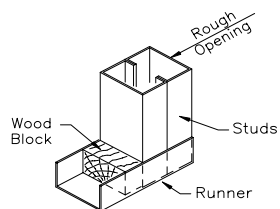
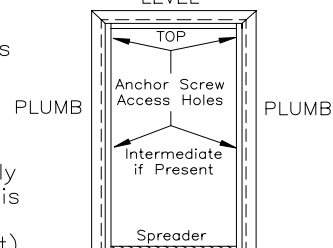
STEP 2



STEP 3

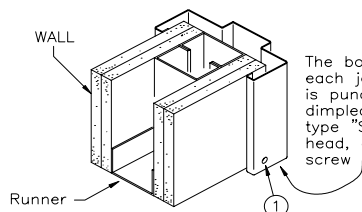


STEP 4  
LEVEL



Align floor runner with rough opening as shown above. Wood blocking suggested for studs less than 20 gage.

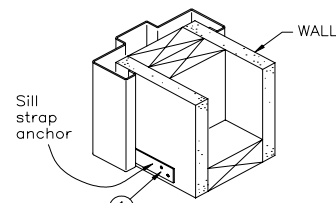
RECOMMENDED WALL CONSTRUCTION AT SILL



STANDARD SILL ANCHOR

\* Some installers prefer to hang door and fit frame to door prior to anchoring at sill.

The bottom of each jamb face is punched and dimpled for a type "S" bugle head, drywall screw



OPTIONAL SILL ANCHOR

① Insert fasteners (not included) and fix jamb to wall framing