

TECHNICAL DATA
FROM
Anemostat
DOOR PRODUCTS
A MESTEK COMPANY

P.O. BOX 4938 • 1220 WATSONCENTER ROAD
CARSON, CA 90745-4206
(310) 835-7500 • FAX (310) 835-0448

e-mail: sales@anemostat.com • website: www.anemostat.com

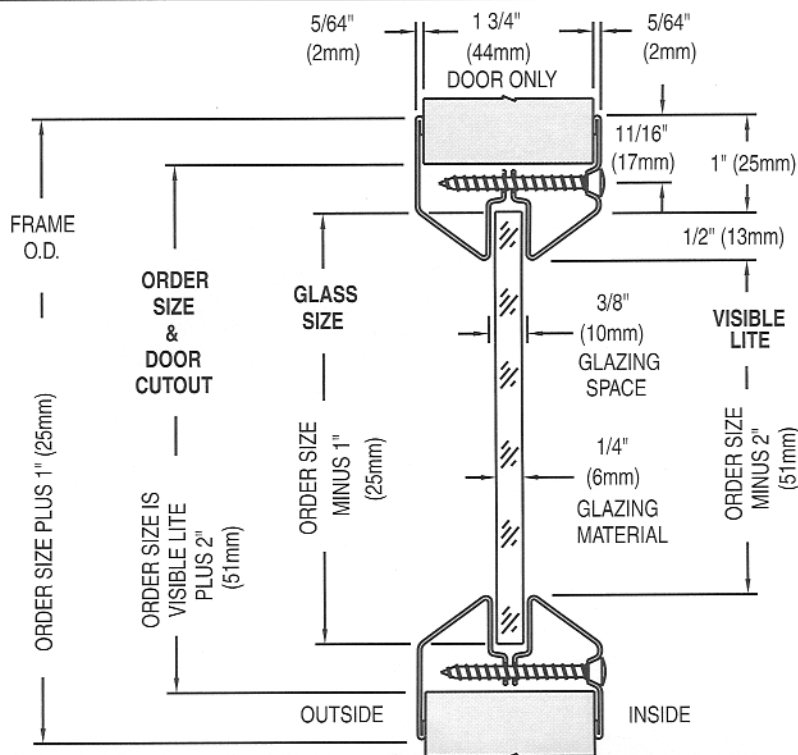
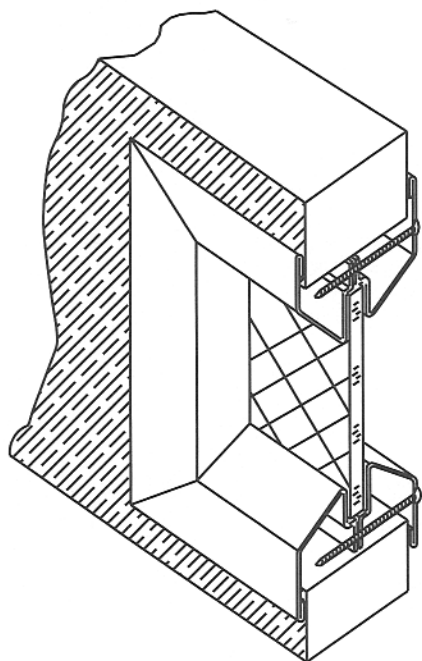
LoPro™
LO-PROFILE
METAL VISION FRAME

FIRE RATED
BY
UL US
UNDERWRITERS'
LABORATORIES

WH® WARNOCK HERSEY

TESTED SUCCESSFULLY TO
B.S.-476.22

DETAIL DRAWING



Anemostat manufacturing dimensions $\pm 1/32$
Actual dimensions are nominal and may vary
based on component manufacturers tolerances.

STANDARD PRODUCT FEATURES

- MATERIAL:** 20 GA. Cold Rolled Steel.
- FINISH:** Grey Primer, Beige or Bronze Baked Enamel.
- INSTALLATION:** One of our newest products is easy to install and provides a low profile, flush to the door look. Uses 1 3/4" sheet metal screws that pass through the door cutout, and fastens to the opposite side of the vision frame, thus eliminating the need to drill the door for thru bolts and saving installation time and labor. It also leaves the corridor side of the frame free of fasteners for added security and a cleaner, more aesthetic appearance.
- DOOR THICKNESS:** For 1 3/4" Wood or Metal Doors.
- GLAZING:** Should be 1/4", 3/16" or 5/16" fire rated with U.L. and/or W.H.I. classification markings. Nominal glazing space of 3/8" allows for glazing tape or compound to be used on one or both sides of the glass. (See Glass and Glazing section)
- AESTHETICS:** Tight mitered corners, beveled glass stop and low profile, provide a clean tapered look.
- IMPORTANT:** Interpretation of building and fire codes may vary. Consult with the local authority having jurisdiction in your area, to determine appropriate standards.

OPTIONAL FEATURES

- MATERIAL:** #304 Stainless Steel, #4 Finish(Satin), Galvanized(Coil, Hot Dipped, or Zinc Plated) Mill Finish Aluminum (Not Fire Rated).
- FINISH:** Special Order Baked Enamel Colors (as per sample chip supplied). Plated Finishes to match the lock, hinges and closer.
- FASTENERS:** Special Security Screw Fasteners, See Page 30, this section.
- SPECIALS:** Fractional Sizes, Lead Lined for X-ray applications. For Special Glass or Door thickness (see FGS-IS or LoPro™-IS). For mullions see (LoPro™-G, FGS-75-G or BFL-123-G.)
- HM CLIP:** Replaces the need for reinforcing channel in the door cutout, see page 31 this section.

FIRE RATINGS (w/ U.L. & W.H.I. classification markings) Negative Pressure

- 20 MINUTE:** Approved listing at 2994 sq.in. visible lite (max. width 35 13/16", max. height 83 5/8").
 - 20/45/60*90* MINUTE:** Approved listing at 1296 sq.in. visible lite (max. width 54", max. height 54").
 - 60/90 MINUTE:** Approved listing at 100 sq.in. visible lite (max. width 10", max. height 33").
 - 3 Hour:*** Approved listing at 100 sq.in. visible lite (max. width 12", max. height 33")
- * Must be used with FIRELITE and Fire listed glazing tape or compound and be used in appropriately tested door assembly.
- NOTE:** For Exterior use, High Humidity or Salt Air application, product must be Galvanized or Stainless Steel.

Job Name & Location	Submitted by

**TESTED
SUCCESSFULLY TO
B.S.-476.22**

AUGUST 2000

METAL VISION FRAMES PAGE 1

4A4A103

POSITIVE PRESSURE - All Fire Rated Products meet test requirements of UBC 7.2-97 and UL 10C.
For Current Info, Consult Factory or check our website, www.anemostat.com